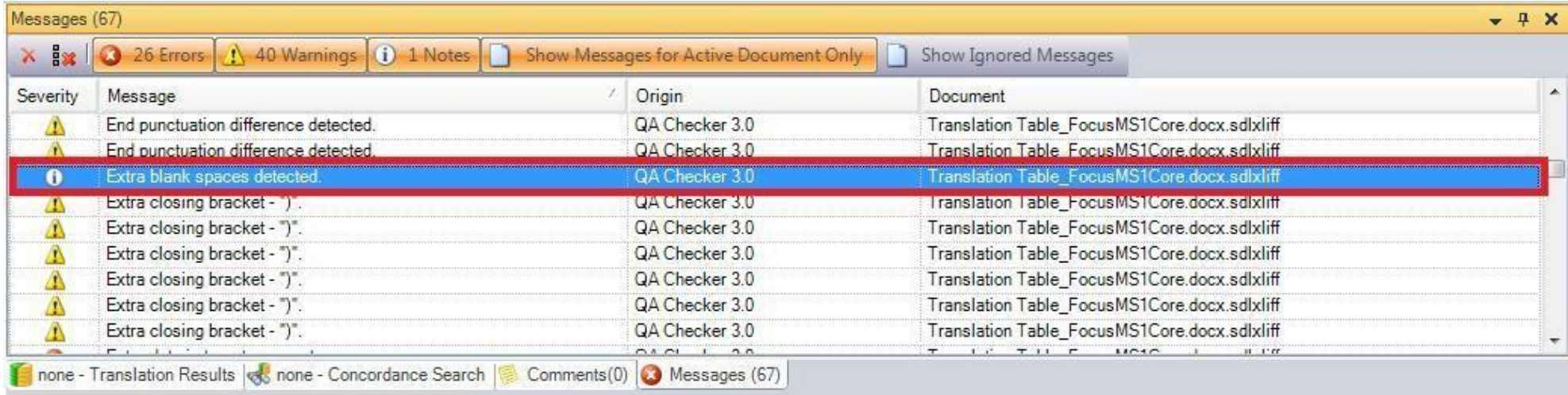


If you run verification checks you can see list of all issues in Messages window.



Severity	Message	Origin	Document
Warning	End punctuation difference detected.	QA Checker 3.0	Translation Table_FocusMS1Core.docx.sdlxliff
Warning	End punctuation difference detected.	QA Checker 3.0	Translation Table_FocusMS1Core.docx.sdlxliff
Note	Extra blank spaces detected.	QA Checker 3.0	Translation Table_FocusMS1Core.docx.sdlxliff
Warning	Extra closing bracket - )	QA Checker 3.0	Translation Table_FocusMS1Core.docx.sdlxliff
Warning	Extra closing bracket - )	QA Checker 3.0	Translation Table_FocusMS1Core.docx.sdlxliff
Warning	Extra closing bracket - )	QA Checker 3.0	Translation Table_FocusMS1Core.docx.sdlxliff
Warning	Extra closing bracket - )	QA Checker 3.0	Translation Table_FocusMS1Core.docx.sdlxliff
Warning	Extra closing bracket - )	QA Checker 3.0	Translation Table_FocusMS1Core.docx.sdlxliff
Warning	Extra closing bracket - )	QA Checker 3.0	Translation Table_FocusMS1Core.docx.sdlxliff

Also, to better see any issues with whitespaces while translating the translators should have the options Show Whitespaces Characters on.

Before you deliver to us, please run verification checks and if needed fix any issues.

It is strongly advised to edit the template you're using to use these settings as default to ensure there's no need to set these for every project manually.

*Note.: There may be slight differences as to where you can access the settings, depending on which version of Studio you're using, e.g. from Studio 2014 onwards, there's no need to set tag verification settings for each file type, there's a common setting under verification.*

Please use the following verification check settings (unless the nature of the respective translation requires further checks):

Project Template Settings - Default

- Project Template
- File Types
- Embedded Content Processors
- Verification
  - QA Checker 3.0
    - Segments Verification
    - Segments to Exclude
    - Inconsistencies
    - Punctuation
    - Numbers
    - Word List
    - Regular Expressions
    - Trademark Check
    - Length Verification
    - QA Checker Profiles
  - Tag Verifier
  - Terminology Verifier
- Language Pairs
- Default Task Sequence

Segment Verification

Forgotten and empty translation

Check for forgotten and empty translations Error

Compare source and target segments

Check for segments where:

Source and target are identical Warning

Ignore tags

Ignore case

Check for target segments which are:

Shorter by (%) 50 Warning

Longer by (%) 50 Note

Ignore segments with fewer than # words: 2

Based on words

Based on characters

Check target segments

Check for forbidden characters Error

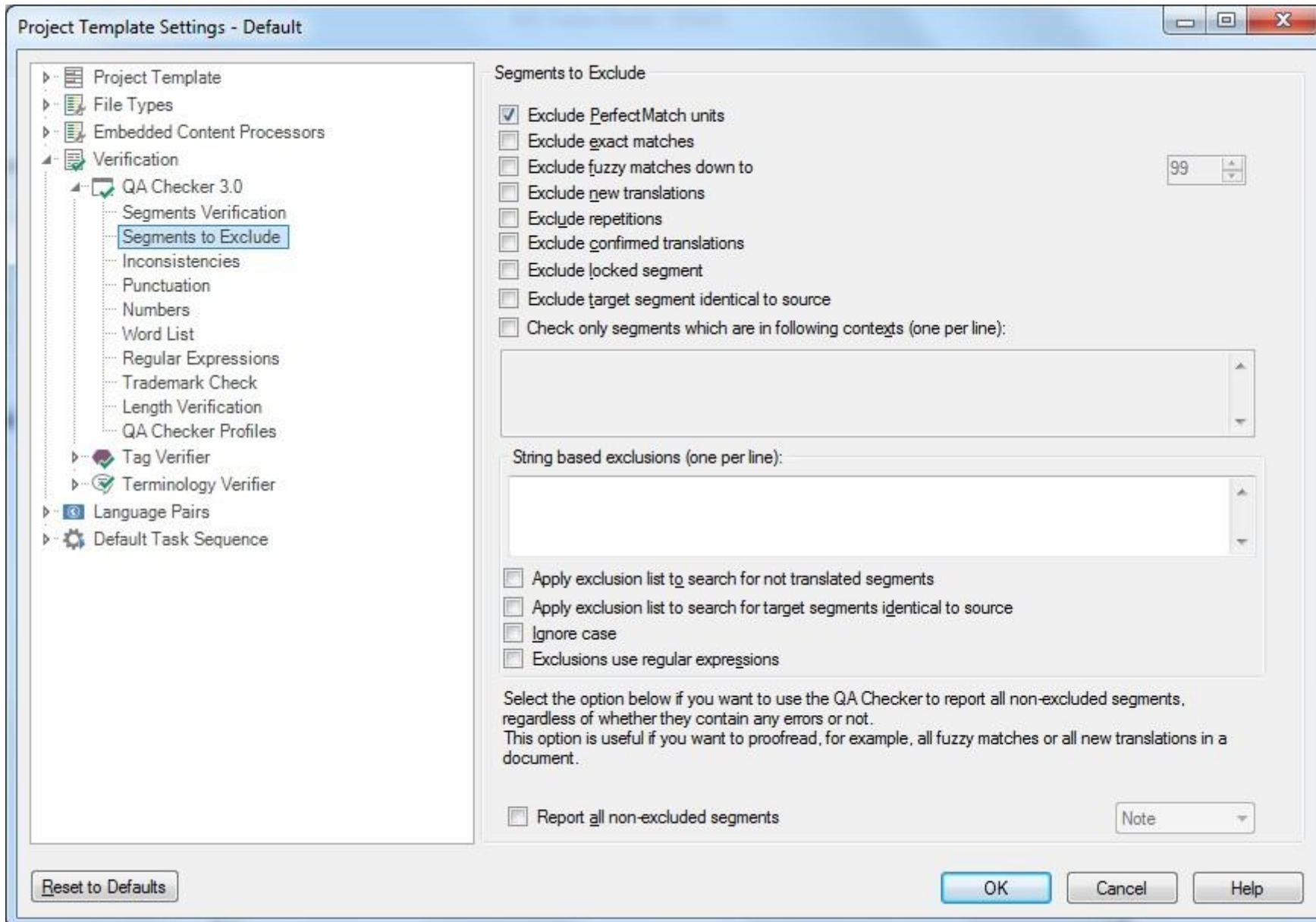
(no delimiter required)

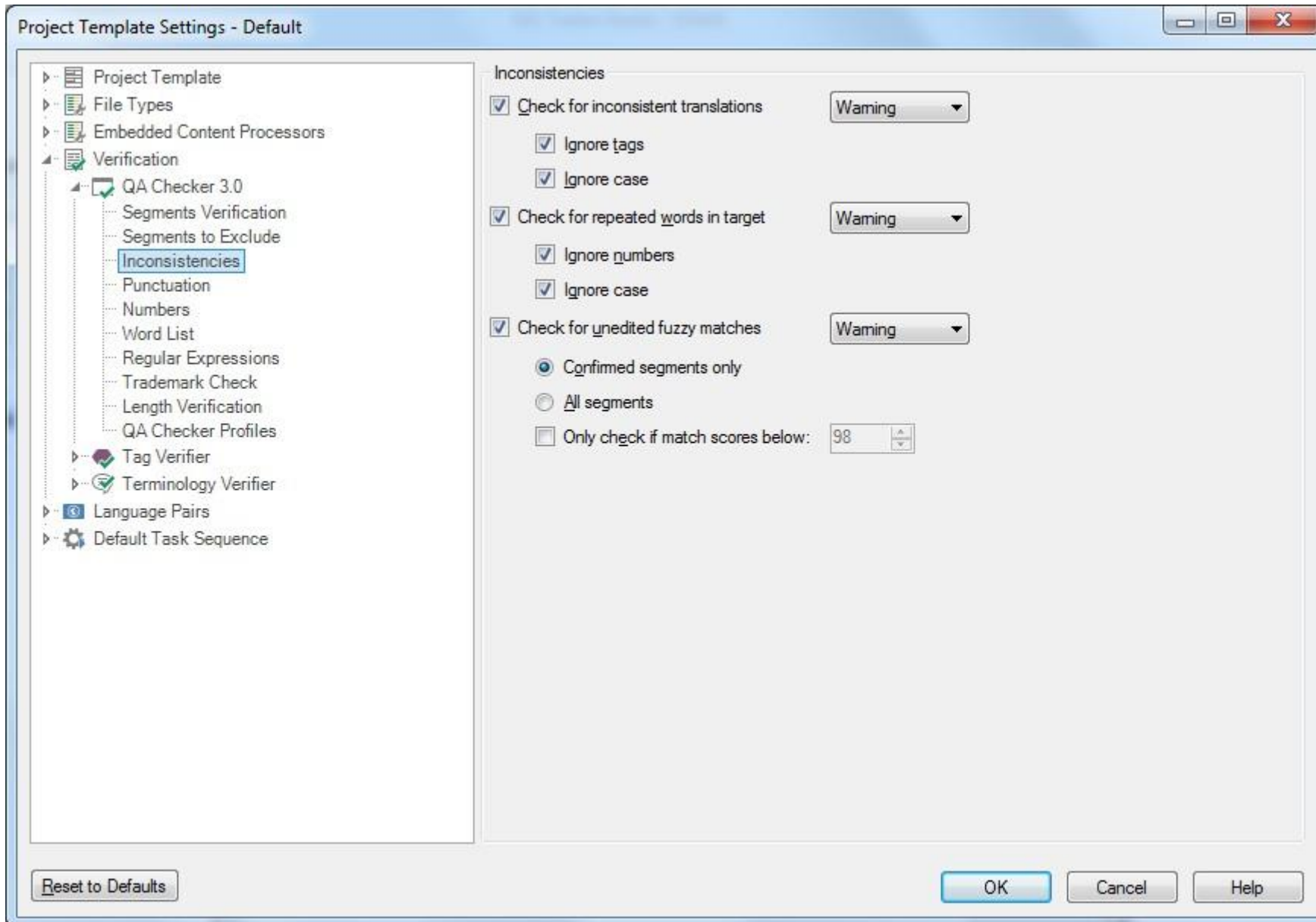
Reset to Defaults

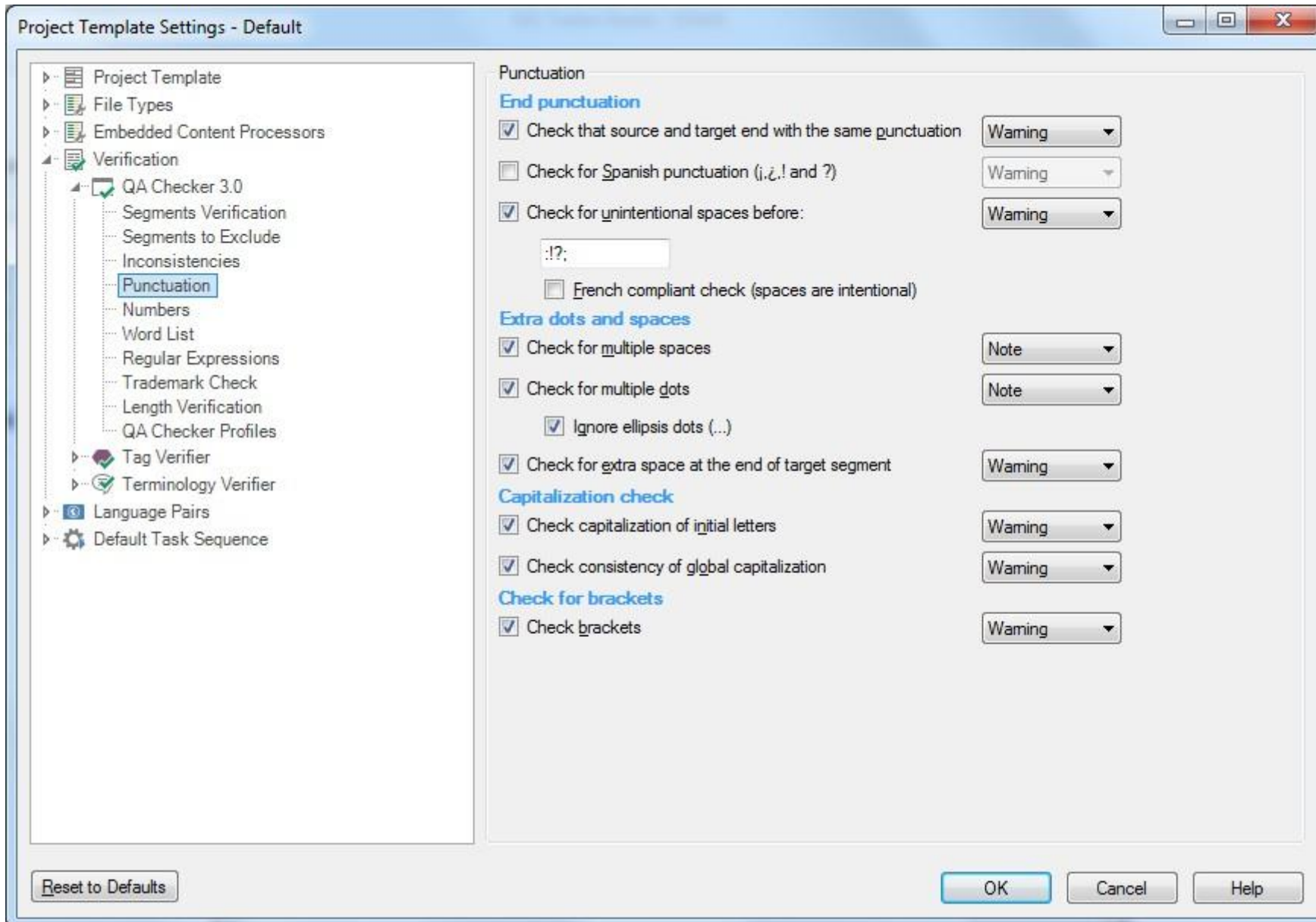
OK

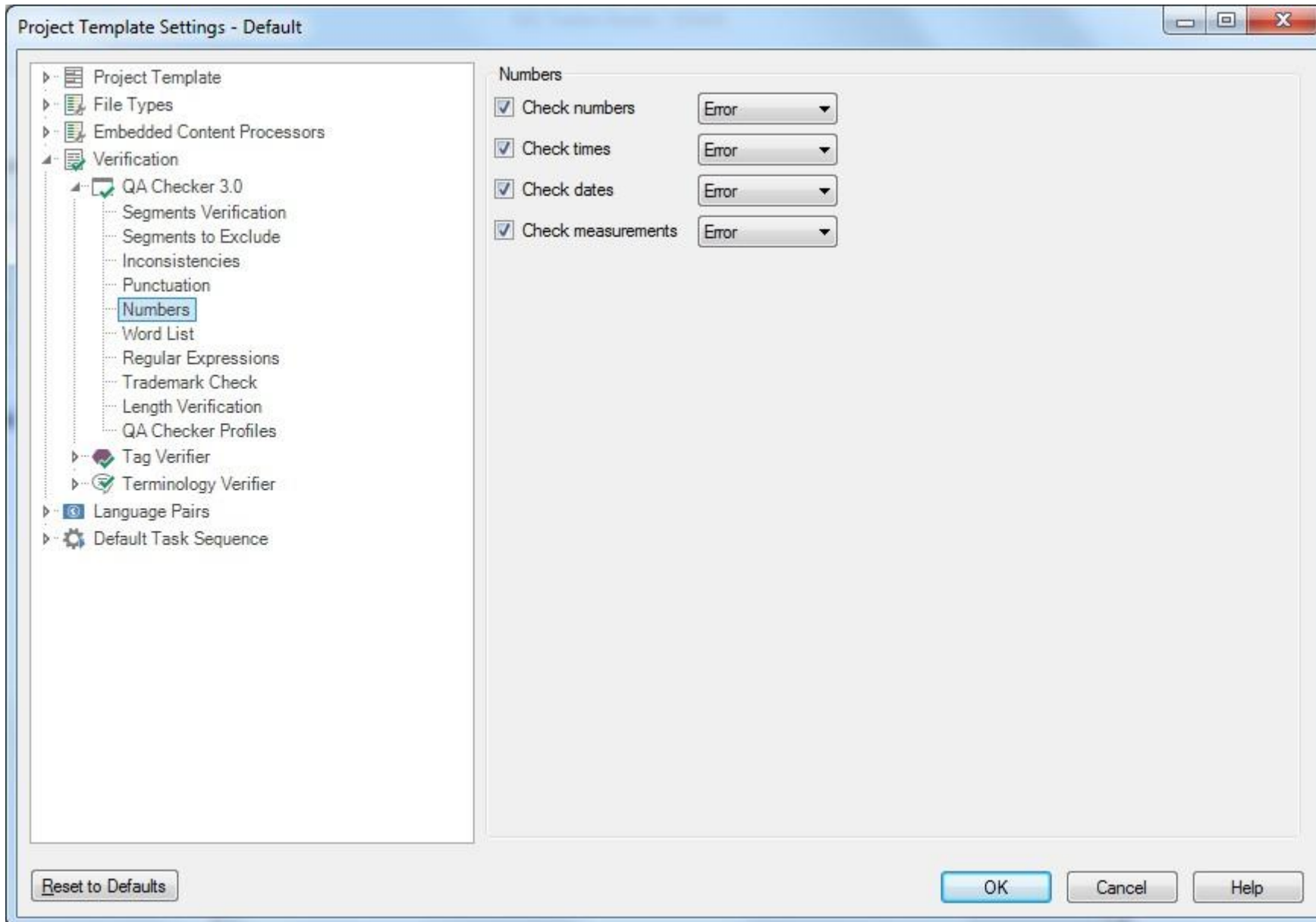
Cancel

Help



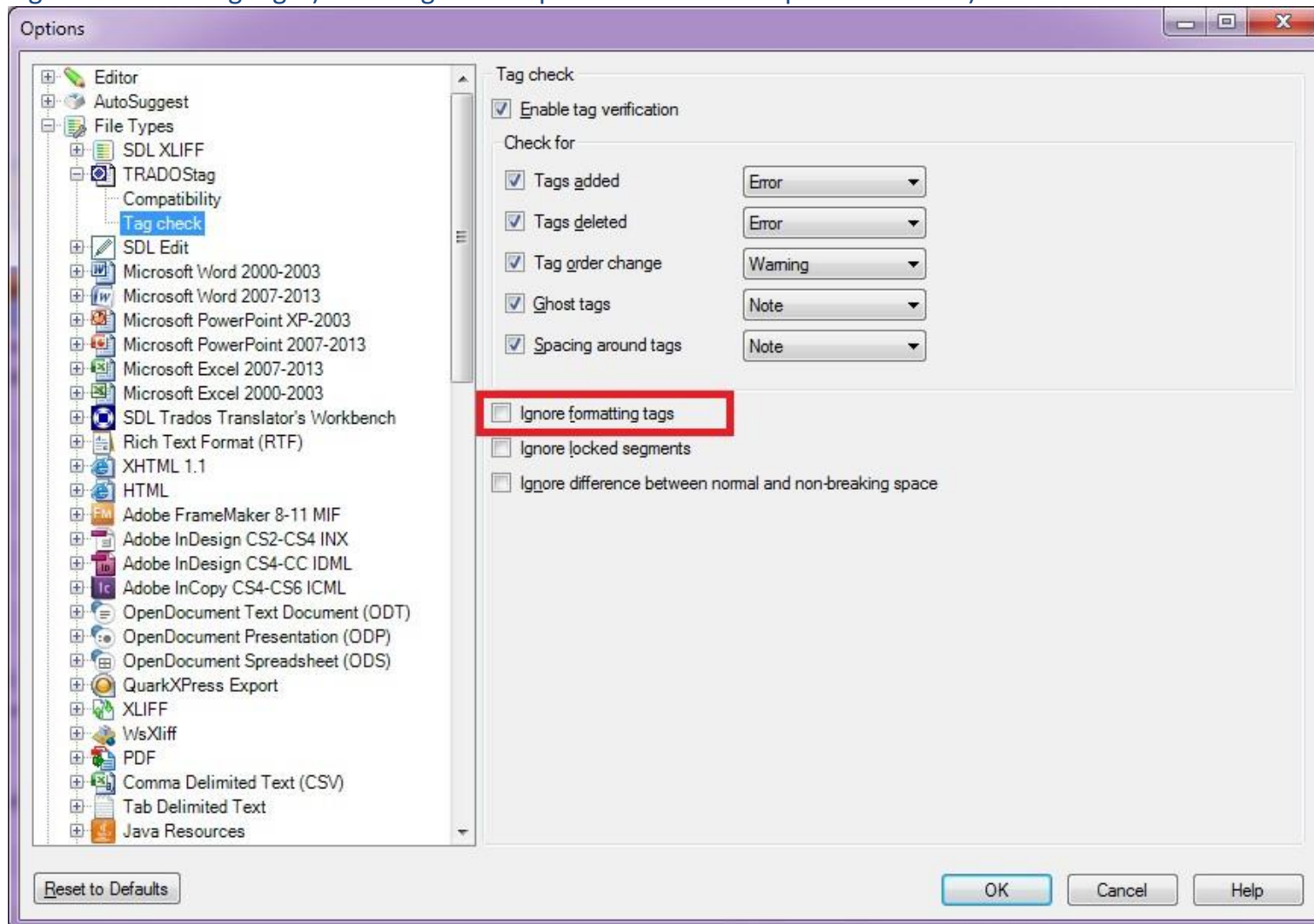






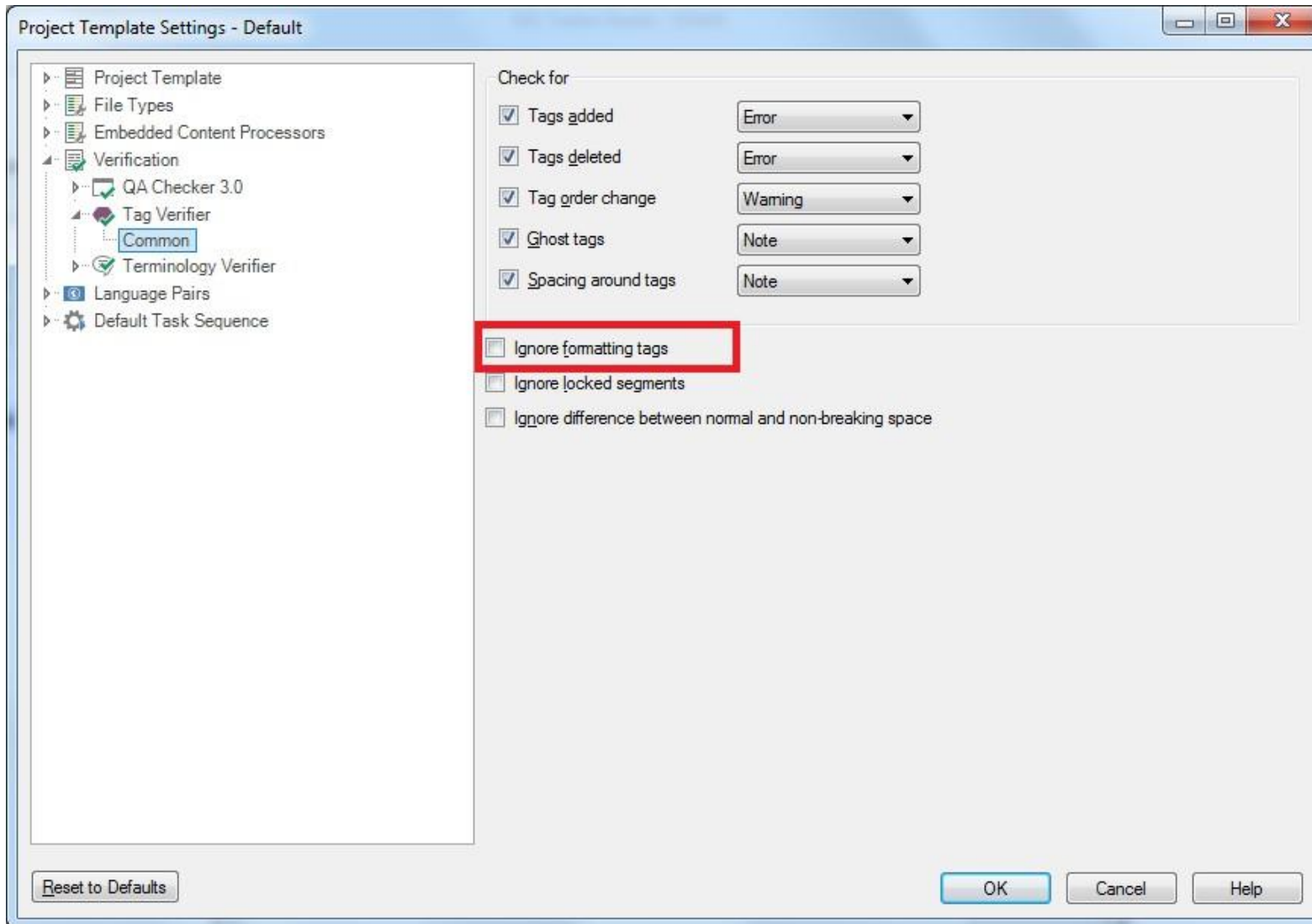
Tag verification in Studio 2009 and 2011: By default Studio ignores formatting tags. So in order to verify the formatting, we would need to go to the file type "(Project settings > File types > \*\*\*relevant file type\*\*\* > "Tag Check") and deselect the option

“Ignore Formatting tags”) in the right-hand panel below the drop-down menus).



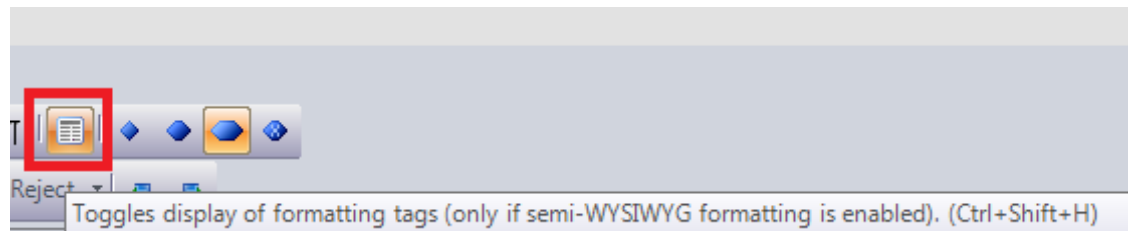


For tag verification in Studio 2014 and above, there's no need to change tag verification settings for each file type anymore, the option has been moved to verification options:

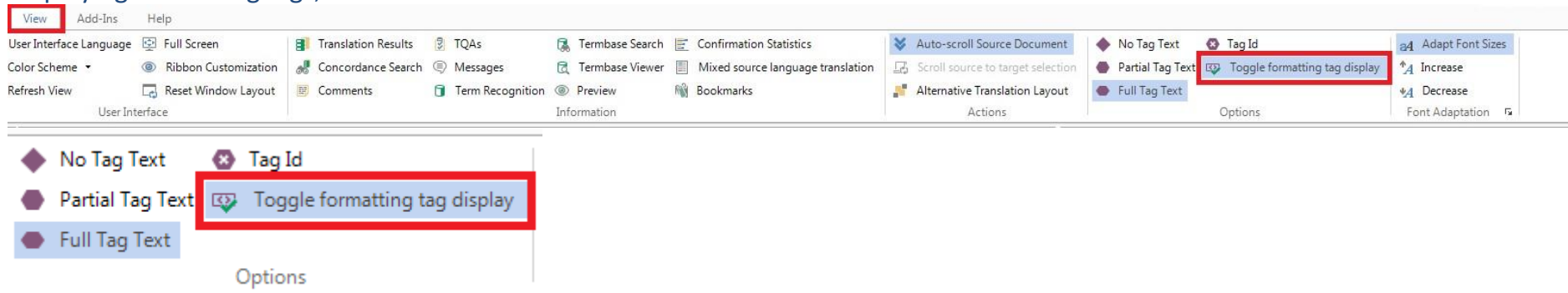


To be able to check the formatting tags, it is strongly advised to view formatting tags during translation, and it is a must during verification.

### Displaying formatting tags, Studio 2009, 2011:



### Displaying formatting tags, Studio 2014 and above:



I hope it is clear. Please let me know if you have any questions.